

# Music for Trombone and Ensemble

For Dyne Eifertsen

Joshua Parmenter  
Seattle, WA 3-28-2001

# Music for Trombone and Ensemble

For Dyne Eifertsen

Tenor Trombone

Flute

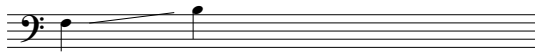
English Horn

Cello

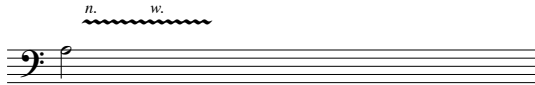
Bassoon

Double Bass

All instruments are shown, in score and parts,  
at transposed written pitch.



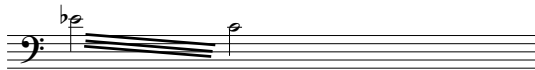
Glissando- All glissandos should happen just before the note being gliss'd to.



Slide Vibrato- narrow (*n.*) vibratos should be barely noticed, wide (*w.*) should be about an eighth tone above and below the notated pitch.



Same Note Glissandos- As with the regular glissando, these should happen just before the note being gliss'd to.



Lip Trills



Sing the letter while playing. In this example, start with A, change to O, then slowly return to normal playing.



Flutter Tongue



Shows cues for specific or all performers.

For ensemble sections, all rhythms and tempos are approximate. In the wind and cello parts, large leaps and difficult passages can be given extra time when needed. The timbre is more important than a strict keeping of tempo and rhythm.

# Music for Trombone and Ensemble

for Dyne Eifertsen

Joshua Parmenter

In a medium tempo

♩ = 60-68

Trombone

First staff of music for Trombone. It begins with a dynamic marking of *sfz sub. p*. The music features a series of notes with various dynamics including *f*, *p*, *mf*, *pp*, and *p*. Fingerings are indicated above the notes, including III VI, II, IV, VI, and IV. There are also performance markings like *n.* and *n. w. n.* with wavy lines above the notes.

Tbn.

Second staff of music for Trombone. It starts with a dynamic marking of *ppp*. The music includes notes with dynamics *p*, *f*, *sfz sub. p*, and *ff*. Fingerings IV VI, IV, IV, II, IV, IV, II, VI, IV, II, II are shown above the notes.

Tbn.

Third staff of music for Trombone. It begins with a dynamic marking of *p*. The music features notes with dynamics *sfz sub. p*, *pp*, *f*, *pp*, *sfz*, *p*, *pp*, and *mf*. Fingerings VI, I, IV, VI, VI, II, VI, I, III, I are indicated above the notes.

Tbn.

Fourth staff of music for Trombone. It starts with a dynamic marking of *p sfz pp*. The music includes notes with dynamics *ff*, *pp*, *pp*, *ppp*, *fff*, *ppp*, and *mp ppp*. Fingerings III, V, VII, V, VII, VII, VII, VI are shown above the notes.

Tbn.

Fifth staff of music for Trombone. It begins with a dynamic marking of *mp*. The music features notes with dynamics *p*. Performance markings include *rit.*, *A Tempo*, *accel.*, and *as quickly as possible*. Fingerings VI, III, VI, VI, III, VI, III, II, IV, II, IV, II, V, II, V are indicated above the notes.

Tbn.

Sixth staff of music for Trombone. It starts with a dynamic marking of *sfz sub. p*. The music includes notes with dynamics *ff*, *p*, *mf*, *ppp*, *mp*, and *ppp sfz*. Fingerings II, VII, V, III, VI, III, II, VI, VI are shown above the notes.

**A**  
(Ensemble)

Tbn. *sfz sub. p* < *ff* *lip trill* > *p* < *f* < *ff* *pp*

Fl. *circa* ♩ = 76 *pp* *x3 only* *2x only* *x3*

E. Hn. *circa* ♩ = 84 *pp* *2x only* *x3 only* *x3*

Cel. *circa* ♩ = 92 *pp* *x3 only* *2x only* *x3*

Bsn. *circa* ♩ = 68 *pp* *2x only* *x3 only* *x3*

Cb. *pp*

repeat until other instruments stop then finish with that bow.

*p*

Tbn. *I III I VII V II* *II II VII VI* *ff* *sfz* > *p* *mf*

Fl. *wavy line*

E. Hn. *wavy line*

Cel. *wavy line*

Bsn. *wavy line*

Cb. *wavy line*

Tbn. *VII V III III VI III VI III V III III VI III VII V III VI III VI VI rit. VI II VI*

*p sfz p f >*



Tbn. *A Tempo VII VI III VI (a narrow vibrato, then gliss.)*

*p f p f pp f > < fff f*



Tbn. **B**  
(Ensemble)  
(ord.) *V II V II II V II accel. rit.*

Fl. *circa ♩ = 84 pp x2*

E. Hn. *circa ♩ = 68 pp x2*

Cel. *circa ♩ = 76 pp x2*

Bsn. *circa ♩ = 92 pp x2*

Cb. *p*

repeat until other instruments stop then finish with that bow.

Tbn. *A Tempo* *v* *VI VI I*

*ff* *pp* *pp* *ff*

A - - - - O - - - - A

Tbn. *II V II* *II V II* *II VI IV II* *IV II*

*p* *mf* *pp* *f* *p* *sfz*

**C** (Ensemble)

Tbn. *pp* *sfz*

A - - - - O - - - - A

O > E >

Fl. *circa* ♩ = 84

*pp* *ff* *pp* *ff* *pp* *ff* *pp*

Continue pattern until next group in conducted in. When cued, begin next pattern immediately.

Play the next line of dynamics on each repeat. Cycle as needed.

E. Hn. *circa* ♩ = 76

*pp* *ff* *pp* *ff* *pp* *ff* *pp*

Continue pattern until next group in conducted in. When cued, begin next pattern immediately.

Play the next line of dynamics on each repeat. Cycle as needed.

Cel. *circa* ♩ = 68

*ff* *pp* *ff* *pp* *ff* *pp*

Continue pattern until next group in conducted in. When cued, begin next pattern immediately.

Play the next line of dynamics on each repeat. Cycle as needed.

Bsn. *circa* ♩ = 92

*pp* *ff* *pp* *ff* *pp*

Continue pattern until next group in conducted in. When cued, begin next pattern immediately.

Play the next line of dynamics on each repeat. Cycle as needed.

Cb. Continuous tone, change bow smoothly.

*p*

Tbn. D (Bass Only)

VI II VI II

*f* *p* A E

Fl.

E. Hn.

Cel.

Bsn.

Cb. *pizz.* *p*

Tbn. (Bass and Trom.)

*ff* *pp*

Fl.

E. Hn.

Cel.

Bsn.

Cb. *ff* *pp*



E

(Ensemble) (Ensemble)

Tbn. *ff*

Fl. *circa* ♩ = 68 *pp* *ff* repeat at *ff* x3

E. Hn. *pp* *ff* repeat at *ff* x3

Cel. *circa* ♩ = 84 *pp* *ff* repeat at *ff* x3

Bsn. *circa* ♩ = 76 *pp* *ff* repeat at *ff* x3

Cb. *arco* repeat until other instruments stop then finish with that bow.

*sfz sub. p*

Tbn.

Fl.

E. Hn.

Cel.

Bsn.

Cb.

**F**  
(Ensemble)

Tbn. *f* *sfz sub. p* *circa* ♩ = 92 *sfz* *p* *A-----O-----A*

Fl. Decrescendo to *pp* after each *sfz* *pp sfz pp sfz pp sfz pp sfz pp sfz* *circa* ♩ = 84

E. Hn. Decrescendo to *pp* after each *sfz* *pp sfz pp sfz pp sfz pp sfz pp sfz* *circa* ♩ = 68

Cel. Decrescendo to *pp* after each *sfz* *pp sfz pp sfz pp sfz pp sfz pp sfz* *circa* ♩ = 76

Bsn. Decrescendo to *pp* after each *sfz* *pp sfz pp sfz pp sfz pp sfz pp sfz*

Cb. Continuous tone, change bow smoothly. Play until next cue, then change to next note.

**G**  
(Ensemble)

Tbn. *mp* *sfz sub. p* *f* *circa* ♩ = 76 *Repeat until cued*

Fl. Decrescendo to *pp* after each *sfz* *sfz pp sfz pp sfz pp sfz pp sfz pp* *circa* ♩ = 92 *Repeat until cued*

E. Hn. Decrescendo to *pp* after each *sfz* *sfz pp sfz pp sfz pp sfz pp sfz pp* *circa* ♩ = 84 *Repeat until cued*

Cel. Decrescendo to *pp* after each *sfz* *sfz pp sfz pp sfz pp sfz pp sfz pp* *circa* ♩ = 68 *Repeat until cued*

Bsn. Decrescendo to *pp* after each *sfz* *sfz pp sfz pp sfz pp sfz pp sfz pp* *Repeat until cued*

Cb. *sfz*

(Ensemble) (Cut-off and rest)

Tbn. *pp* *ff* *pp*

When cued, continue playing. When the next quarter note is reached, hold that note until cut-off. The rest with the fermata follows.

Fl.

E. Hn.

Cel.

Bsn.

Cb.

When cued, continue playing. When the next quarter note is reached, hold that note until cut-off. The rest with the fermata follows.

When cued, continue playing. When the next quarter note is reached, hold that note until cut-off. The rest with the fermata follows.

When cued, continue playing. When the next quarter note is reached, hold that note until cut-off. The rest with the fermata follows.

H

(Ensemble)

Tbn. *sfz sub. p* *f* *sfz sub. p*

A Tempo

circa ♩ = 92

Fl. *sfz pp* *sfz pp* *sfz pp* *sfz pp* *sfz pp*

circa ♩ = 68

E. Hn. *sfz pp* *sfz pp* *sfz pp* *sfz pp* *sfz pp*

circa ♩ = 76

Cel. *sfz pp* *sfz pp* *sfz pp* *sfz pp* *sfz pp*

circa ♩ = 84

Bsn. *sfz pp* *sfz pp* *sfz pp* *sfz pp* *sfz pp*

Continuous tone, change bow smoothly. Play until next cue, then change to next note.

Cb. *sfz sub. p*

**I**  
(Ensemble)

Tbn. *mf* > *ppp* *ff* *p* *ppp* *f*

circa ♩ = 84

Fl. *pp*

circa ♩ = 92

E. Hn. *pp*

circa ♩ = 68

Cel. *pp*

circa ♩ = 76

Bsn. *pp*

Cb. *n.*

Tbn. *p* *f* *p*

*n.* *II* *IV VI*

*p*

**J**  
(Bass and Trom.)

Tbn. *p* *mf* *mp* *f* *p*

Cb. *p* *mf* *mp* *f*

*sing the stem-up note*

(Ensemble)

K ▼

Tbn. *singing stops* VI VI IV VI VI I IV II IV II II IV VI IV VI I

*f* *p* *f* *p* *f*

Hold until next group is conducted. Breathe as needed.

Fl. *circa* ♩ = 76 *pp*

E. Hn. *circa* ♩ = 68 *pp*

Cel. *circa* ♩ = 84 *pp*

Bsn. *circa* ♩ = 92 *pp*

Cb. *n.*

Hold until next group is conducted. Breathe as needed.

Hold until next group is conducted. Breathe as needed.

Hold until next group is conducted. Breathe as needed.

Tbn. VI VI III I III I

*f* *p* *ff*

3:2 3:2

Fl.

E. Hn.

Cel.

Bsn.

Cb.

L (Ensemble)

Tbn. *mf sfz mf sfz mp sfz*

(same tempo)

Fl. *pp*

(same tempo)

E. Hn. *pp*

(same tempo)

Cel. *pp*

(same tempo)

Bsn. *pp*

Repeat as needed, starting each time at the frog

Cb. *mf*

Tbn. *sfz p sfz f sfz sfz f*

Fl.

E. Hn.

Cel.

Bsn.

Cb.

Tbn.

Musical notation for Tuba (Tbn.) in bass clef, showing a melodic line with various intervals and dynamics.

**M**  
(Ensemble)  
▼

Tbn.

Musical notation for Tuba (Tbn.) in bass clef, starting with a *ff* dynamic. The notation includes a series of eighth and sixteenth notes.

Fl.

Musical notation for Flute (Fl.) in treble clef, starting with a *f* dynamic. It includes a "last repeat" bracket and a wavy line indicating a continuous tone.

E. Hn.

Musical notation for English Horn (E. Hn.) in treble clef, starting with a *f* dynamic. It includes a "last repeat" bracket and a wavy line indicating a continuous tone.

Cel.

Musical notation for Cello (Cel.) in bass clef, starting with a *f* dynamic. It includes a "last repeat" bracket and a wavy line indicating a continuous tone.

Bsn.

Musical notation for Bassoon (Bsn.) in bass clef, starting with a *f* dynamic. It includes a "last repeat" bracket and a wavy line indicating a continuous tone.

Cb.

Musical notation for Contrabass (Cb.) in bass clef, starting with a *f* dynamic. It includes a "last repeat" bracket and a wavy line indicating a continuous tone.

Continuous tone, change bow smoothly. Play until cued for next note.

Tbn.

Fl.

E. Hn.

Cel.

Bsn.

Cb.

**N** (Bass Only)

Tbn.

Fl. swell into and out of each note  
*pp* etc.

E. Hn. swell into and out of each note  
*pp* etc.

Cel. swell into and out of each note  
*pp* etc.

Bsn. swell into and out of each note  
*pp* etc.

Cb. *f* *p*



(Cut-off and rest) O  
(Bass and Trom.)

Tbn.

Fl.   
hold last note until cut off  
Breathe as needed.

E. Hn.   
hold last note until cut off  
Breathe as needed.

Cel.   
hold last note until cut off  
Breathe as needed.

Bsn.   
hold last note until cut off  
Breathe as needed.

Cb.   
Hold until cued  
pizz.  
pp

(Ensemble)   
ff pp mf p pp  
Wait for cut-off

Fl.   
p

E. Hn.   
p

Cel.   
p

Bsn.   
p

Cb.